

1

2

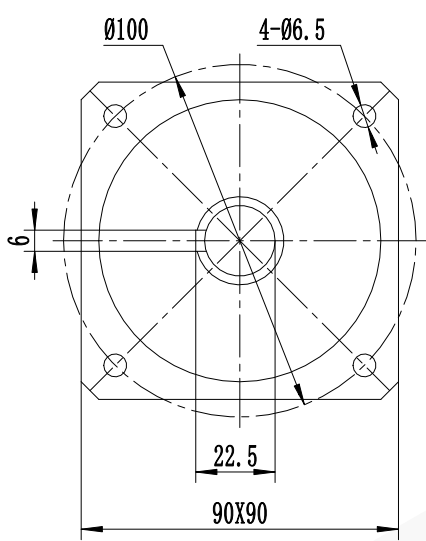
3

4

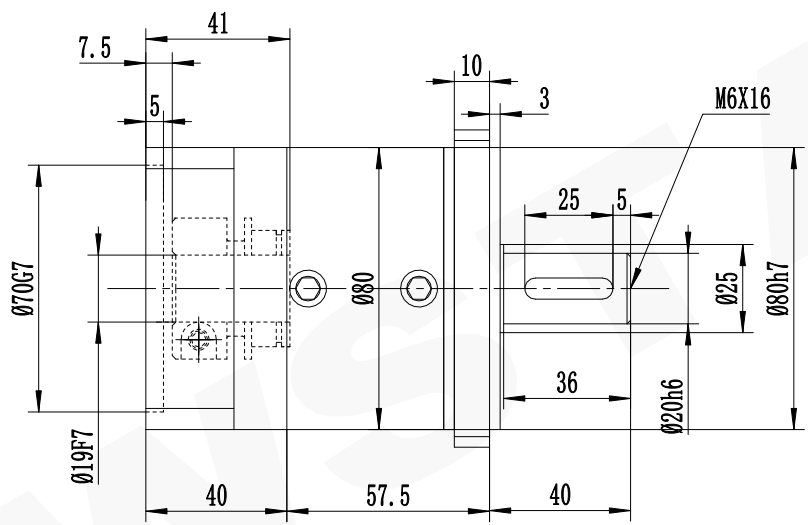
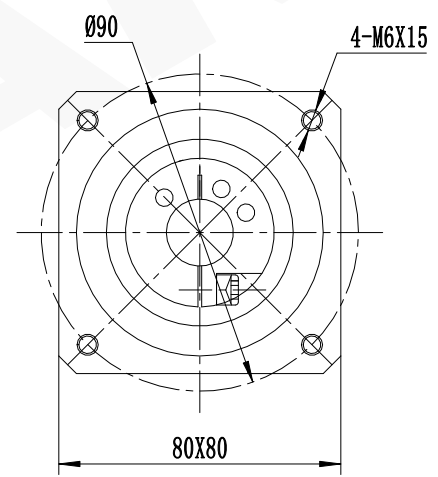
5

6

输出端
Output




输入端
Input



减速比 (Ratio i)		3	4	5	6	8	10	
额定承载扭矩 (Rated load torque)	Nm	40	110	90	55	50	32	
最大加速力矩 (Max. acceleration torque)	Nm	72	198	162	99	90	57.6	
急停扭矩 (Emergency stop torque)	Nm	120	330	270	165	150	96	

精密行星减速机技术参数			
容许最大径向载荷 (Max. radial load)	900N	空载力矩20℃ (No-load torque)	≤ 0.2Nm
容许最大轴向载荷 (Max. axial load)	1200N	润滑 (Lubrication)	合成润滑脂 (Synthetic grease)
额定输入转速 (Nominal input speed)	3000r/min	使用环境温度 (Operation temperature)	-15℃~+90℃
最大输入转速 (Max input speed)	6000r/min	使用寿命 (Service life)	≥20000h
噪音 (Noise)	≤ 60db	防护等级 (Protection grade)	IP54
回程间隙 (Backlash)	10arcmin	PL系列	Tel/电话: 0533-6288333 6288444 Fax/传真: 0533-6288411 Web/网址: www.newstart.cn
		P2 L1	

未注线性尺寸极限偏差 Unmarked tolerance	
0.5-3	±0.2
3-6	±0.3
6-30	±0.5
30-120	±0.8
120-400	±1.2
400-1000	±2

精密行星减速机 Precision Planetary Gear Boxes

PF080L1-i-P2-S2 19-40-70-90-M6
A. PF. 080.

1

2

3

4

5

6